



## ROSIE'S TIPS & TRICKS: HOW TO PDF?

Author: Rosie | Date: April 2025

This page can also be found on Rosie's Tips & Tricks page (link via QR code). It will walk you through all the need to knows when using a digital sewing pattern.

You will notice that you receive several files when ordering only one pattern. Now, which one is which:

- **INSTRUCTIONS:**

This file consists of all the information you need to be able to make your garment. Which is everything that would normally be printed in the pattern booklet. Such as; what supplies do I need, what size do I choose, fitting tutorials, cutting layouts and sewing instructions.

- **PATTERN A4 US LETTER (HOME PRINTERS):**

This is the pattern that is split up in numerous pages that can be printed on both A4 as well as US Letter paper. How to assemble these pages will be explained below.

- **PATTERN A0 OR LARGE SHEET (PRINT SHOP):**

This is a larger paper pattern. For some patterns this will be one large sheet (700 mm wide) and for some patterns it will be on A0 Size paper. Futur patterns will only be A0 size. In case you have access to a plotter or would like to print the pattern at a print shop, this is the file you would need. More information on printing at a print shop can be found on page 4.

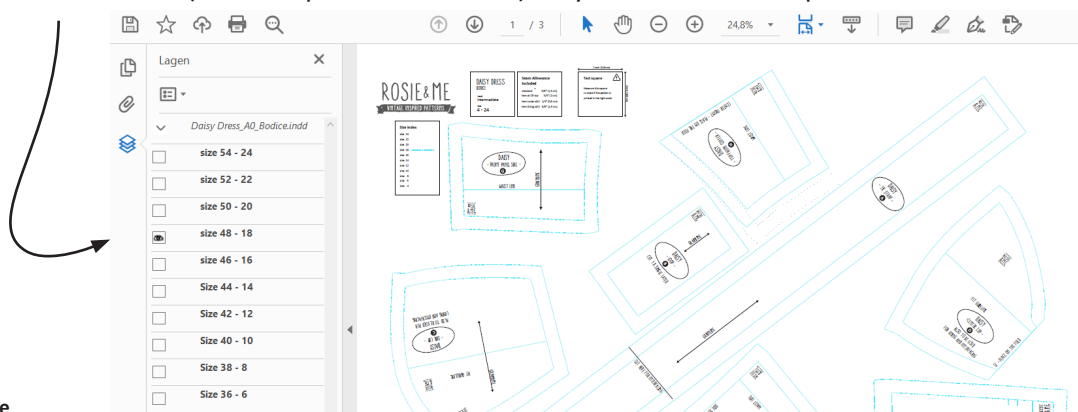
- **EXTRA NOTE ON PATTERN FORMATS:**

You might notice that some patterns are made in layers, some in color and others in plain old black and white. Over the years we decided to add colors and layers, giving our customers the opportunity to only print one size. However we noticed the files would sometimes become so large that these would exceed the permitted file size on ETSY (20 MB per file). So when lucky you might benefit of fewer size lines, but unfortunately sometimes it had to be old school and will show numerous lines.

- **SIZE LAYERS & ONLY PRINTING ONE SIZE:**

Click on the layers icon to see the full size range appear. Now you will see each size specified, showing both EU and USA sizing. The bottom line called 'hulplijnen en rasters' can be ignored. You can tick the boxes of each size that you wish to see and/or print.

Once you select a size (for example size 18 below) only that size in that specific size color will show.



# PRINTING YOUR DIGITAL PATTERN AT HOME:

## WHAT DO YOU NEED?:

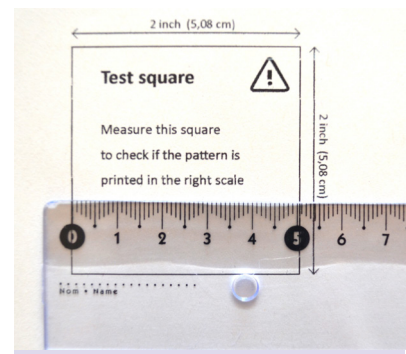
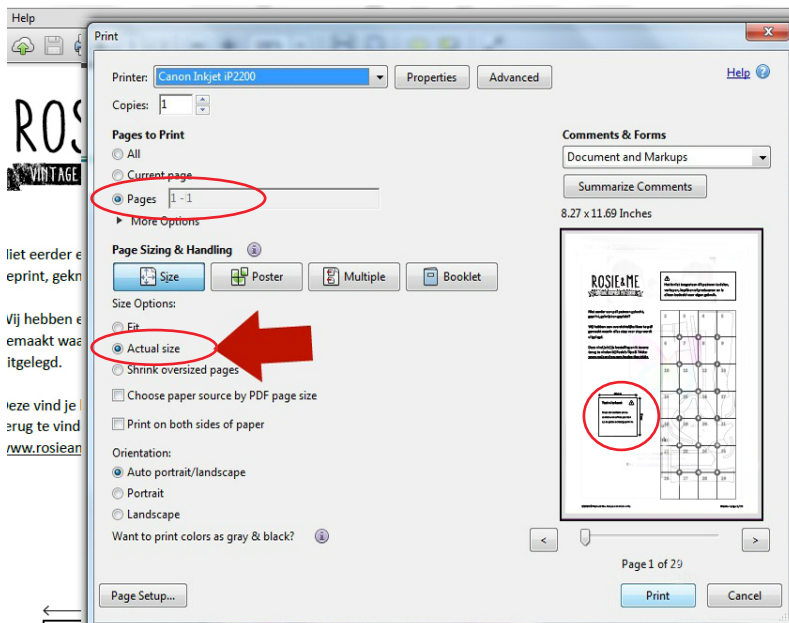
- A home printer
- A4 or US letter paper
- Paper scissors, papercutter or a paper rotary cutter
- Ruler or measuring tape
- Glue stick and/or tape



## 1 OPENING AND TESTING:

Open the pattern file with the multiple sheets and print only the 1st page that shows the test square. This will check to see if your printer settings are correct. It is important not to scale your pattern when you print it. Choose the option: **Do Not Scale**, or **at 100%**, or **Actual size**.

It is also advisable to adjust your print quality settings to: **Fast** or **Draft**. This will save you some ink plus it will help you print the pages faster. In most cases this printing quality is satisfactory to read your patterns clearly.



## 2 PRINTING AND CHECKING:

After you have printed the 1st page, you measure the test square precisely with a ruler or measuring tape. The square should measure exactly 2" x 2" (5,08 cm x 5,08 cm). In case the square does not measure correctly, recheck your printing settings and scaling options again.

Does it measure correctly? Great! Go ahead and print all the pages with these settings.

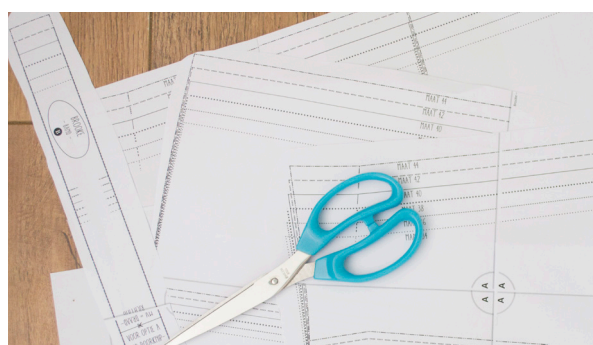
### 3 TRIMMING OR CUTTING:

All patternsheets are printed with a grey square around them. You do not need to cut out the squares completely. Only cut the squares on one of the long and one of the short ends allowing it to overlap. Make sure to cut along the outside edge of the grey square. So you will see all the grey squares as the entire pattern is assembled. To cut the edges you can either use regular paper scissors, or what I find handy is to use a paper cutter. You can find them pretty inexpensively and they are easy to cut a few pages at once. An old rotary cutter (that you do not use for your fabrics anymore) together with a ruler can be an easy cutting tool as well. Whatever works for you!



### 4 ASSEMBLING:

Now the real deal: assembling all the pattern pieces together. The image on your 1st pattern page will show you how the pattern should be assembled. Make room on your table or floor and lay out all the sheets. Make sure all the markings on the corners correspond with each other precisely. Now tape them together or use a glue stick. I find that a glue stick works most quickly and makes the pattern bulge less, but I do use a little masking tape to reinforce the corners. Again, test to see whatever works best for you!



### 5 CUTTING:

You are almost there! You can trace your pattern with tracing paper and then cut the pieces, but since you can reprint the pattern, I personally prefer to cut into the printed paper directly. What helps when dealing with a large sheet of paper is to roughly cut the pattern pieces out while you are assembling the pages together. This makes them more manageable when cutting the pieces precisely to your needed measurement.

## 6 STORING PDF PATTERNS:

Everyone has their own way of storing patterns. Truth is that .pdf patterns that are printed on computer paper are a bit harder to fold.

Some other ways to store them could be: rolling them up with an elastic and label around them, stick them in a cardboard tube, punch a hole through each pattern piece and hang them with your label on a hanger, or use a pants hanger to hang them up.

You can fold them and place them in a large envelope, zip-lock bag or save them in a binder with clear binder sheets. When you wish to use the pattern again you can carefully iron out the wrinkles. Be carefull not to iron the tape you might have used! And perhaps use a pressing cloth for possible ink-marks.

## PRINTING AT A PRINT SHOP:

---

If you want to eliminate the cutting and gluing part, you can choose to print your pattern at a print shop as well.

For this alternative you need the file:

**A0 or Pattern large sheet.**

It is advisable to first call around to different print shops in your area. You will learn that there are price differences in print services.



Explain that it is for a black and white (no color) line drawing (no photo), that it can be printed in draft mode quality and that it is not necessary to print on high quality paper (photo paper for example).

The measurements of the pattern sheet (when not A0) are stated in the file name.

If you received a layered A0 file, you can inform them which size layer(s) you wish to have them printed.

When you have found your print shop, they will inform you how they would like to receive the file. This could be for example via a dropbox or bringing a USB stick into the shop.

Don't forget to mention that it is important **not to scale** the pattern! After the pattern is printed (so before you take it home) measure the test square carefully. This should be exactly 2" x 2" (5,08 cm x 5,08 cm). If it is incorrect you need to ask for a reprint.